

# Portfolio Holder (Children, Young People and Families) Decision Making Session

## Agenda

4 December 2009

**A Portfolio Holder (Children, Young People and Families) Decision Making Session** will be held in Committee Room 1 at SHIRE HALL, WARWICK on Friday 4 December 2009 at 12.02 p.m. or on the rising of the Portfolio Holder (Community Safety) Decision Making Session if that is later.

The agenda will be:

### 1. General

#### **(1) Members' Disclosures of Personal and Prejudicial Interests.**

Members are reminded that they should declare the existence and nature of their personal interests at the commencement of the item (or as soon as the interest becomes apparent). If that interest is a prejudicial interest the Member must withdraw from the room unless one of the exceptions applies.

Membership of a district or borough council is classed as a personal interest under the Code of Conduct. A Member does not need to declare this interest unless the Member chooses to speak on a matter relating to their membership. If the Member does not wish to speak on the matter, the Member may still vote on the matter without making a declaration.

#### **(2) Minutes of previous meeting**

To approve the minutes of the meeting held on 26 November 2009 (to follow).

### 2. **Proposal to increase the number of primary school places in Stratford on Avon District**

Report of the Strategic Director of Children, Young People and Families enclosed.

### 3. **Proposed Changes to Primary School Priority Areas in Nuneaton**

Report of the Strategic Director of Children, Young People and Families enclosed

### 4. **Proposed Changes to Secondary School Priority Areas in Nuneaton and Hartshill**

Report of the Strategic Director of Children, Young People and Families enclosed

The public reports referred to are available on the Warwickshire Web  
[www.warwickshire.gov.uk/committee-papers](http://www.warwickshire.gov.uk/committee-papers)

## 5. Any Other Urgent Business

**JIM GRAHAM**  
**Chief Executive**  
**Warwickshire County Council**  
**November 2009**

Cabinet Portfolio Holder for Children, Young People and Families: Councillor Izzi Seccombe [cillrmsseccombe@warwickshire.gov.uk](mailto:cillrmsseccombe@warwickshire.gov.uk)

General Enquiries: Please contact Janet Purcell, Executive & Member Support Manager  
Tel 01926 413716 or email: [janetpurcell@warwickshire.gov.uk](mailto:janetpurcell@warwickshire.gov.uk)

The public reports referred to are available on the Warwickshire Web  
[www.warwickshire.gov.uk/committee-papers](http://www.warwickshire.gov.uk/committee-papers)

**AGENDA MANAGEMENT SHEET**

**Name of Decision-Maker** Portfolio Holder (Children, Young People and Families) Decision Making Session

**Date of Meeting** 4 December 2009

**Report Title** Primary School Places in Stratford-on-Avon District

**Summary** The purpose of this report is to seek approval to undertake formal consultations upon proposals to expand Bridge Town Primary School and increase the admission number of The Dasset C of E (Controlled) Primary School.

**For further information please contact:** Phil Astle  
Assistant Head of Service – Transforming Education Team  
Tel: 01926 742166  
philastle@warwickshire.gov.uk

**Would the recommended decision be contrary to the Budget and Policy** No

**Framework? [please identify relevant plan/budget provision]**  
**Background papers**

- School Organisation Framework Document 2005/10
- Cabinet reports 16.10.08 and 2.4.09

**CONSULTATION ALREADY UNDERTAKEN:** Details to be specified

Other Committees  .....

Local Member(s)  Cllr Kate Rolfe – Stratford South

*“Cllr Cockings and I are not prepared to make comments about this at such short notice. We have been given no indication as to how Bridgetown School is to be expanded and we were unaware of this even being a consideration. I am the District Ward Member for Alveston and I also had no idea about this proposal. We need some time to consider these proposals and would appreciate more details”.*

Cllr Ron Cockings – Stratford South  
Cllr Chris Williams – Kineton

Other Elected Members  CYP&F O&S Chair and Vice-Chair for information:  
 Cllr John Ross  
 Cllr Carolyn Robbins

CYP&F O&S Spokespersons for information:  
 Cllr Peter Balaam  
 Cllr Tim Naylor  
 Cllr Carolyn Robbins

Cabinet Member  Cllr Izzi Seccombe – “noted”

Other Cabinet Members consulted  Cllr Martin Heatley

Chief Executive  .....

Legal  Diane Nation

Finance  David Clarke, Strategic Director of Resources  
*“Oliver Winters comments incorporated into the report on behalf of David Clarke”*

Other Strategic Directors  .....

District Councils  .....

Health Authority  .....

Police  .....

Other Bodies/Individuals  .....

**FINAL DECISION** **NO**

**SUGGESTED NEXT STEPS:** Details to be specified

Further consideration by this Committee  .....

To Council  .....

To Cabinet Portfolio Holder  April 2010

To an O & S Committee  .....

To an Area Committee  Stratford-on-Avon Area Committee on 17.03.10 following consultation with stakeholders

Further Consultation  All stakeholders (subject to Cabinet Portfolio Holder’s decision)

**Portfolio Holder (Children, Young People and Families)  
Decision Making Session – 4 December 2009**

**Primary School Places in Stratford-Upon-Avon**

**Report of the Strategic Director for Children,  
Young People and Families**

**Recommendation:**

That approval is given to undertake formal consultation upon proposals to:

- i) Expand Bridge Town Primary School, Stratford-upon-Avon, from 45 to 60 places per year with effect from September 2011.
- ii) Increase the admission number of The Dasset C of E (Controlled) Primary School, Fenny Compton, from 25 to 30 places per year with effect from September 2011.

**1. Introduction**

- 1.1 The purpose of this report is to set out proposals to expand Bridge Town Primary School, Stratford-upon-Avon, from 45 to 60 places per year and increase the admission number of The Dasset C of E (Controlled) Primary School in Fenny Compton from 25 to 30 places per year with effect from September 2011.

**2. Background**

**Bridge Town Primary School**

- 2.1 The town of Stratford-upon-Avon is served by eight primary schools, including St. Gregory's Catholic Primary School, three Church of England voluntary controlled schools and four community primary schools.
- 2.2 Stratford has attracted significant numbers of new houses as the only town in South Warwickshire to be designated for large-scale housing developments. A large number of new houses have been built over the last 10 years and the number of additional children living in the town has resulted in some schools being full while others have year groups, or some classes, that are full.
- 2.3 Table 1 below sets out the number of pupils on roll in each primary school in Stratford in September 2009:

**Table 1**

*Number of primary school pupils on roll and school capacities as at September 2009*  
(Source: September 2009 School Census)

| School         | Capacity     | Number on roll Sep.2009 | Rec        | Y1         | Y2         | Y3         | Y4         | Y5         | Y6         | * PAN      |
|----------------|--------------|-------------------------|------------|------------|------------|------------|------------|------------|------------|------------|
| Bishopton      | 210          | 140                     | 23         | 25         | 24         | 18         | 13         | 16         | 21         | 30         |
| Alveston       | 140          | 166                     | 29         | 28         | 25         | 21         | 16         | 21         | 26         | 20         |
| Thomas Jolyffe | 420          | 384                     | 51         | 58         | 52         | 57         | 63         | 48         | 55         | 60         |
| The Willows    | 280          | 290                     | 45         | 43         | 45         | 33         | 42         | 45         | 37         | 40         |
| Bridge Town    | 315          | 310                     | 46         | 44         | 46         | 43         | 37         | 48         | 46         | 45         |
| Stratford      | 210          | 213                     | 30         | 30         | 31         | 31         | 30         | 28         | 33         | 30         |
| St. Gregory's  | 210          | 220                     | 31         | 30         | 28         | 31         | 32         | 35         | 33         | 30         |
| Shottery       | 70           | 75                      | 13         | 9          | 11         | 9          | 12         | 7          | 14         | 10         |
| <b>Total</b>   | <b>1,855</b> | <b>1,798</b>            | <b>268</b> | <b>267</b> | <b>262</b> | <b>243</b> | <b>245</b> | <b>248</b> | <b>265</b> | <b>265</b> |

\* PAN = the official Planned Admission Number

- 2.4 Three primary schools are currently operating above their physical capacity: Stratford Primary School, Shottery St. Andrew's C of E (Controlled) Primary School and St. Gregory's Catholic (Aided) Primary School. From 2009 Bishopton Primary School was expanded, increasing its capacity from 22 to 30 pupils per year. With effect from 2010 admissions the capacity of The Willows C of E (Controlled) School will increase from 40 to 45 places per year and the capacity of Alveston C of E (Controlled) School from 20 to 30 places per year.
- 2.5 Table 2 below shows that on the basis of the demographic and new housing information available, it is estimated that the number of primary school pupils in the town will exceed current total capacity of schools in the town by 2011:

**Table 2**

*Forecast numbers of reception aged pupils up to 2013, including expected rise in pupil numbers resulting from housing development and building in the recommended margin of 5% contingency to allow for variations in the forecast*

|                          | Actual 2008 | Actual 2009 | Forecast |      |      |      |
|--------------------------|-------------|-------------|----------|------|------|------|
|                          |             |             | 2010     | 2011 | 2012 | 2013 |
| Demographic              | 267         | 268         | 239      | 291  | 235  | 255  |
| Housing (per year group) | n/a         | n/a         | 2        | 4    | 11   | 18   |
| 5% Surplus required      | n/a         | n/a         | 14       | 14   | 14   | 14   |
| Total Planned Demand     | n/a         | n/a         | 255      | 309  | 260  | 287  |
| Capacity                 | 258         | 265         | 280      | 280  | 280  | 280  |
| Surplus                  | -9          | -3          | 25       | -29  | 20   | -7   |

## Notes:

- *Based on existing expansions at Bishopton from 2009 and The Willows and Alveston from 2010.*
- *Housing developments include minor developments on Birmingham Road and the Cattlemarket Site and major sites from 2012 include the Egg Packing Station, Kipling Road and Shottery Fields.*
- *A surplus capacity of 5% is recommended for areas of potential growth, e.g. for new housing to provide some flexibility.*

2.6 In September 2008 the current Reception year capacity of Stratford town schools was exceeded and was managed mainly by Bishopton Primary School and The Willows and Alveston schools admitting above their published admission limits. In 2009, the situation was much the same, although Bishopton Primary School had been expanded. The 2010 cohort is forecast to be a smaller cohort than the previous two and the expansion of The Willows and Alveston Primary schools will have been completed. A large Reception cohort of 295 pupils is forecast for 2011, some 15 above the agreed Reception year capacity.

2.7 As well as ensuring that there are enough school places across the town, there is also an issue about whether the current school places are located where they are needed. Families should be able to secure a school place in a local school within a reasonable distance from their home. In the town of Stratford there is a degree of 'cross over' of pupils, with pupils living in one priority area attending a school in another area. Whilst most of this is due to parental preference, it can also happen if a school is unable to provide places for all of the children in its priority area. There is a particular problem in relation to Bridge Town Primary School where, due to new housing developments close to the school, it was unable to admit all of the applicants from its priority area for admission to the Reception year group in September 2008 and September 2009.

## 3. Reasons for the Proposal

3.1 Bridge Town Primary School is a popular and successful one and a half form (45 places per year) primary school serving a large geographical area comprising Stratford –east of the river to the Tiddington Road, Loxley Road – and the Parishes of Atherstone-on-Stour, Clifford Chambers and Preston-on-Stour (excluding Sweet Knowle). Earlier in 2009 it was agreed that the Parish of Clifford Chambers would transfer to the priority area of Welford Primary School with effect from 2010 admissions. The population of Bridge town's priority area has increased significantly as a result of a large new housing development very close to the school. A further phase of the development with some 100 dwellings is likely to come forward shortly, further exacerbating the demand for school places at Bridge Town Primary.

3.2 The school currently has 310 pupils on roll, an admission limit of 45 pupils per year, a capacity of 315 pupils. Table 3 below sets out the number of pupils in each year group and shows the school to be above its admission number in four out of seven year groups. The school has a private Early Years provider on site.

**Table 3**

*Number of pupils on roll at Bridge Town Primary School – November 2009*

|                | School year |        |        |        |        |        |        |       |          |
|----------------|-------------|--------|--------|--------|--------|--------|--------|-------|----------|
|                | Reception   | Year 1 | Year 2 | Year 3 | Year 4 | Year 5 | Year 6 | Total | Capacity |
| Pupils on roll | 46          | 44     | 46     | 43     | 37     | 48     | 46     | 310   | 45       |

Source: School and DCSF

- 3.3 In 2008 there were 61 applications from pupils living in the school's priority area for 45 reception places and therefore 16 'in area' pupils were refused admission including pupils living in Clifford Chambers. The situation for 2009 is that there were 83 applications from pupils living in the school's priority area for 45 reception places and therefore 38 'in area' pupils were refused admission. Initial information on school preferences for September 2010 admissions suggests that even with a much lower cohort the school will be oversubscribed.
- 3.4 In order to address the need for school places within its priority area it is proposed to expand Bridge Town Primary School from 45 places per year to 60 places per year with effect from September 2011 admissions.
- 3.5 A feasibility study carried out earlier this year indicates that Bridge Town Primary School could be extended to accommodate two forms of entry (60 pupils per year). It is considered that a two form entry school would, over time, assist the school in organising its classes into single age groups.
- 3.6 The table below shows current and past numbers on roll at this school:

**Table 4**

*Total number of pupils on roll at Bridge Town Primary School*

| Year           | Jan 2005 | Jan 2006 | Jan 2007 | Jan 2008 | Jan 2009 | Autumn 2009 |
|----------------|----------|----------|----------|----------|----------|-------------|
| Pupils on roll | 280      | 301      | 306      | 307      | 309      | 310         |

## **4. Building**

- 4.1 It is proposed to extend the school in line with the planned increase in admission number referred to in paragraph 3.4.
- 4.2 Subject to the outcome of this report design of the new accommodation will be undertaken in consultation with representatives of the school with a view to providing sufficient accommodation for an intake of 60 pupils from September 2011.



## 5. Funding

- 5.1 The total cost of the project is estimated at approximately £1,500,000. It is proposed that this project is funded from the schools capital programme and any Section 106 contributions. 'Basic Need' projects are the first priority for use of capital funding. The revenue implications will be met from the Dedicated Schools Grant.

## 6. The Dasset C of E (Controlled) Primary School

- 6.1 The Governing Body of The Dasset C of E (Controlled ) Primary School wishes to increase the admission number of the school from 25 to 30 places per year with effect from September 2011 admissions. The school currently has a capacity of 175 pupils with 177 pupils on roll. However, the school is popular and oversubscribed and believes that it can accommodate up to 30 pupils in each class, which it already does in some cases. There is a housing development of some 12 homes planned for Station Road in the village. An intake of 30 pupils per year would enable the school to accommodate the additional pupils from this development and provide additional income for the school to fund its current staffing class organisation.
- 6.2 The school traditionally takes 92% of its intake from its own priority area and pupil numbers in the area are forecast to be stable over the current planning period.
- 6.3 The proposal is being considered on the basis that there are no capital implications with regards to providing additional accommodation.

**Table 5**

*Total number of pupils on roll at The Dasset C of E (Controlled) Primary School*

| Year           | Jan 2008 | Jan 2009 | Autumn 2009 | Capacity |
|----------------|----------|----------|-------------|----------|
| Pupils on roll | 183      | 176      | 182         | 175      |

## 7. Consultation

- 7.1 It will be necessary to consult key stakeholders including staff, existing parents and the parents of prospective pupils, local schools, the Pupil School Council, Diocesan Authorities, local schools, other local admission Authorities, Stratford-on-Avon District Council and Parish Councils in Stratford-on-Avon District, neighbouring Local Authorities and Members of Parliament.
- 7.2 The outcome of formal consultations would be reported back to Stratford-on-Avon Area Committee in March 2010 for comment and then to the Portfolio Holder for consideration.

## **8. Planned Timescale**

8.1 The key milestones, subject to responses at each stage, are as follows:

- Consultation on proposals – 1 January 2010 - 28 February 2010
- Stratford-on-Avon Area Committee – 17 March 2010
- Final consideration by Portfolio Holder – April 2010
- Statutory Notices published \* – May to June 2010
- Implementation of proposals – September 2011

*\*Bridge Town proposal only*

## **9. Summary**

- 9.1 There is a demonstrated need for additional primary school places in Stratford and it is proposed to consult stakeholders on proposals to expand Bridge Town Primary School to accommodate these.
- 9.2 The request from the Governing Body of The Dassetts Cof E (Controlled) Primary School to increase its admission number would improve the school's operation and enable it to ensure it can continue to meet the demand for places from the local area.

MARION DAVIS  
Strategic Director for Children,  
Young People and Families

Saltisford Office Park  
Ansell Way  
Warwick

23 November 2009

**AGENDA MANAGEMENT SHEET**

**Name of Decision-Maker** Portfolio Holder (Children, Young People and Families) Decision Making Session

**Date of Meeting** 4 December 2009

**Report Title** Proposed Changes to Primary School Priority Areas in Nuneaton

**Summary** This report seeks permission to consult on proposed changes to primary school priority areas in Nuneaton.

**For further information please contact:** Janet Neale  
School Project Officer  
Tel: 01926 742266  
janetneale@warwickshire.gov.uk

**Would the recommended decision be contrary to the Budget and Policy Framework? [please identify relevant plan/budget provision]** No

**Background papers**

**CONSULTATION ALREADY UNDERTAKEN:**

Details to be specified

Other Committees  .....

Local Member(s)  Cllr Barry Longden – Arbury & Stockingford  
Cllr Sonja Wilson – Arbury & Stockingford  
Cllr June Tandy – Nuneaton Wem Brook

Other Elected Members  CYP&F O&S Chair and Vice-Chair for information:  
Cllr John Ross  
Cllr Carolyn Robbins

CYP&F O&S Spokespersons for information:  
Cllr Peter Balaam  
Cllr Tim Naylor  
Cllr Carolyn Robbins

- Cabinet Member  Cllr Izzi Seccombe – “noted”
- Other Cabinet Members consulted  .....
- Chief Executive  .....
- Legal  Diane Nation “*comments incorporated into the report*”
- Finance  David Clarke, Strategic Director of Resources “no comments”
- Other Strategic Directors  .....
- District Councils  .....
- Health Authority  .....
- Police  .....
- Other Bodies/Individuals  .....

**FINAL DECISION** **NO**

**SUGGESTED NEXT STEPS:** Details to be specified

- Further consideration by this Committee  .....
- To Council  .....
- To Cabinet  Cabinet 11.03.10
- To an O & S Committee  .....
- To an Area Committee  Nuneaton and Bedworth Area Committee 10.3.10
- Further Consultation  All stakeholders (subject to Cabinet Portfolio Holder’s decision)

**Portfolio Holder (Children, Young People and Families)  
Decision Making Session – 4 December 2009**

**Proposed Changes to Primary School Priority Areas in  
Nuneaton**

**Report of the Strategic Director for Children,  
Young People and Families**

**Recommendation**

That the Portfolio Holder approves consultation taking place on proposed changes to primary school priority areas in Nuneaton.

**1. Purpose of the Report**

- 1.1 This report seeks permission to consult on proposed changes to primary school priority areas in Nuneaton.

**2. Introduction**

- 2.1 The Bermuda Park housing development in Nuneaton does not all currently fall within the priority area of any school. Proposed changes to secondary school provision in the town will provide an opportunity to rectify this matter at secondary level, but will do nothing to change the current position at primary phase.
- 2.2 The School Admissions Regulations state that admission authorities seeking to make changes to a school's admission arrangements must consult for a period of no less than eight weeks between 1 November and 31 March. All steps must be taken to determine admission arrangements by 15 April.
- 2.3 If approved, following formal consultations, the changes would take effect from September 2011.

**3. The Proposal**

- 3.1 A school priority area is a geographical area defined on rational grounds by the school's admission authority. Where a school is oversubscribed, its admission criteria usually ensures that children living in the priority area are given places before other applicants. There is no guarantee that all pupils living within a

school's priority area will be admitted, but parents will expect that a place for their child will generally be available at their priority school.

- 3.2 Part of the Bermuda Park development currently falls within the priority areas of Glendale Infant School and Middlemarch School which is a junior school. However parts of the housing development at Bermuda Park do not currently appear in a priority area for any primary school. This will mean that the children of families living on parts of the development will not receive priority for admission to any primary school. This is problematic and could result in families having to travel some distance to secure places for their children. It could also mean that children from the same family are unable to attend the same school as their siblings.
- 3.3 Glendale Infant School and Middlemarch Junior School are the nearest schools to the development and it would seem appropriate to change existing priority areas for those schools to include the whole of Bermuda Park. The schools already admit children from the development and this proposal would simply help formalise existing practice.
- 3.4 Initial discussions have taken place with the two schools concerned and they are in favour of the proposal. It is envisaged that the two schools will be able to accommodate the children this increase in their priority area will bring.
- 3.5 If approved, this will ensure that children living on the Bermuda Park development fall within the priority area for Glendale Infant and Middlemarch schools. We do not envisage this proposal having an adverse effect on any other schools in the area as the children living on Bermuda Park already attend Glendale Infant School and Middlemarch School.

## **4. Consultation**

- 4.1 As previously stated, the School Admissions Regulations requires a period of consultation before changes to priority areas can take place.
- 4.2 The Local Authority is looking to run a consultation process between 14 December 2009 and 12 February 2010. This will then allow feedback to Cabinet for a decision on 11 March 2010.
- 4.3 Consultation documents will be distributed to the parents/carers of all children in schools in Nuneaton, the local MPs, the Diocesan Authorities, the Borough Council, all schools in the area, all Nuneaton and Bedworth Borough and County Councillors, Trade Unions and Professional Associations, and Neighbouring Local Authorities.

## **5. Summary**

- 5.1 The Bermuda Park housing development in Nuneaton does not all currently fall within the priority area of any school. It is proposed to increase the current priority areas for both Glendale Infant School and Middlemarch School to rectify this matter at primary level.

- 5.2 Consultation on the proposed changes must take place before the end of March 2010 although changes will not come into effect until admissions in September 2011.

MARION DAVIS  
Strategic Director for Children,  
Young People and Families

Saltisford Office Park  
Ansell Way  
Warwick

23 November 2009

**AGENDA MANAGEMENT SHEET**

**Name of Decision-Maker** Portfolio Holder (Children, Young People and Families) Decision Making Session

**Date of Meeting** 4 December 2009

**Report Title** Proposed Changes to Secondary School Priority Areas in Nuneaton and Hartshill

**Summary** This report seeks permission to consult on proposed changes to secondary school priority areas in Nuneaton and Hartshill, conditional on the closure of Manor Park School and Alderman Smith School and the opening of an Academy in their place.

**For further information please contact:** Mark Gore  
Head of Service – Transforming Education  
Tel: 01926 742588  
markgore@warwickshire.gov.uk

**Would the recommended decision be contrary to the Budget and Policy Framework? [please identify relevant plan/budget provision]** No

**Background papers** Cabinet papers 06.11.08, 27.11.08 and 09.07.09

**CONSULTATION ALREADY UNDERTAKEN:** Details to be specified

Other Committees  .....

Local Member(s)  All councillors in the Nuneaton and Bedworth area plus Cllr Colin Hayfield (Arley) and Cllr Carol Fox (Hartshill)

Cllr June Tandy – Nuneaton Wem Brook – “I object to any decisions being made even for the ability to consult on any proposals for school boundary changes until such a time as a definitive decision has been made on the future of Manor Park and Alderman Smith schools.”



Cllr Barry Longden- Arbury and Stockingford  
*"Despite many many claims that the Academy is not a done deal this report clearly assumes that the Academy proposals will go ahead without any consideration of parental, children, and community opinion, and there is absolutely no reason to rush this through in this manner. This being the case there is little point in responding to this at this stage and I will save my comments until the formal consultation."*

Other Elected Members

CYP&F O&S Chair and Vice-Chair for information:  
 Cllr John Ross  
 Cllr Carolyn Robbins

CYP&F O&S Spokespersons for information:  
 Cllr Peter Balaam  
 Cllr Tim Naylor  
 Cllr Carolyn Robbins

Cabinet Member

Cllr Izzi Seccombe – *"noted"*

Other Cabinet Members consulted

.....

Chief Executive

.....

Legal

Diane Nation *"comments incorporated into the report"*

Finance

David Clarke, Strategic Director of Resources *"no comments"*

Other Strategic Directors

.....

District Councils

.....

Health Authority

.....

Police

.....

Other Bodies/Individuals

.....

**FINAL DECISION**

**NO**

**SUGGESTED NEXT STEPS:**

Details to be specified

Further consideration by this Committee

.....

- To Council  .....
- To Cabinet  Cabinet 11.03.10
- To an O & S Committee  .....
- To an Area Committee  Nuneaton and Bedworth Area Committee 10.3.10
- Further Consultation  All stakeholders (subject to Cabinet Portfolio Holder's decision)

**Portfolio Holder (Children, Young People and Families)  
Decision Making Session – 4 December 2009**

**Proposed Changes to Secondary School Priority Areas in  
Nuneaton and Hartshill**

**Report of the Strategic Director for Children,  
Young People and Families**

**Recommendation:**

That the Portfolio Holder approves consultation taking place on proposed changes to secondary school priority areas in Nuneaton and Hartshill, conditional on the closure of Manor Park School and Alderman Smith School and the opening of an Academy in their place.

**1. Purpose of the Report**

- 1.1 This report seeks permission to consult on proposed changes to secondary school priority areas in Nuneaton and Hartshill.

**2. Introduction**

- 2.1 The County Council is currently working with North Warwickshire and Hinckley College on a proposal to open an Academy in Nuneaton. The proposal is linked to the closure of both Manor Park and Alderman Smith Schools with the Academy being built on the Alderman Smith site.
- 2.2 If approved, the development of an Academy will see one school taken out of Nuneaton.
- 2.3 With the removal of a school it will be necessary to review the priority areas of the remaining schools in the town. Informal discussions have taken place with the schools involved to consider possible options.

**3. The Proposal**

- 3.1 A school priority area is a geographical area defined on rational grounds by the school's admission authority. Where a school is oversubscribed, its admission criteria usually ensures that children living in the priority area are given places before other applicants. There is no guarantee that all pupils living within a school's priority area will be admitted, but parents will expect that a place for their child will generally be available at their priority school.
- 3.2 It is proposed to make changes to the priority areas for Higham Lane School and Etone School. In addition we will be asking Hartshill School and The George Eliot School to make changes to their priority areas. As Trust Schools, Hartshill

and George Eliot schools are their own admissions authority and can therefore determine their own priority areas. Proposals will also include consideration of the planned priority area for the Academy.

- 3.3 Following initial informal discussions with the schools, it is proposed that the changes as detailed in **Appendix A** be the subject of consultation.

#### **4. Consultation**

- 4.1 The School Admissions Regulations state that admission authorities seeking to make changes to a school's admission arrangements must consult for a period of no less than eight weeks between 1 November and 31 March. All steps must be taken to determine admission arrangements by 15 April.
- 4.2 The Local Authority is looking to run a consultation process between 14 December 2009 and 12 February 2010. This will then allow feedback to Cabinet for a decision on 11 March 2010.
- 4.3 Consultation documents will be distributed to the parents/carers of all children in schools in Nuneaton and Hartshill, the Local MPs, the Diocesan Authorities, the Borough Council, all schools in the area, all Nuneaton and Bedworth Borough and County Councillors, the Learning and Skills Council, Trade Unions and Professional Associations, and Neighbouring Local Authorities.
- 4.4 Any changes approved will not come into effect until admissions in September 2011. For admissions to secondary schools in September 2010, existing priority areas will apply.
- 4.5 This consultation is likely to have to be completed before the Secretary of State makes a decision about the Academy. If the proposal to establish an Academy is not supported and Manor Park School and Alderman Smith School remain open, the proposed changes to the priority areas of the schools in Nuneaton will not be necessary.

#### **5. Summary**

- 5.1 The proposal to close both Manor Park and Alderman Smith schools and to open an Academy in Nuneaton will require a change to secondary school priority areas within the area.
- 5.2 Consultation on the proposed changes must take place before the end of March 2010, although changes will not come into effect until admissions in September 2011.

MARION DAVIS  
Strategic Director for Children,  
Young People and Families  
Saltisford Office Park  
Ansell Way  
Warwick  
23 November 2009

## Changes to Secondary School Priority Areas in Nuneaton

### Background to the Review

In 2008, the Authority began a discussion with schools about the pattern of secondary provision. There were three key drives for that review:

- Relatively low levels of attainment and achievement
- Poor school buildings and the need to have a coherent plan for the area in advance of Building Schools for the Future
- High levels of surplus places

**The aim of the review is to establish a pattern of strong, viable and successful schools which will lead to better outcomes and higher levels of attainment across the area as a whole.**

### Existing Arrangements

#### Existing Town Priority Areas as of October 2009

There are currently three areas in the town of Nuneaton that are shared between two schools:

- Camp Hill – shared between Manor Park and Hartshill
- Whitestone – shared between George Eliot and Etone
- An Area shared between Etone and Manor Park

It is anticipated that these areas will only come under the priority area of one school as part of this review.

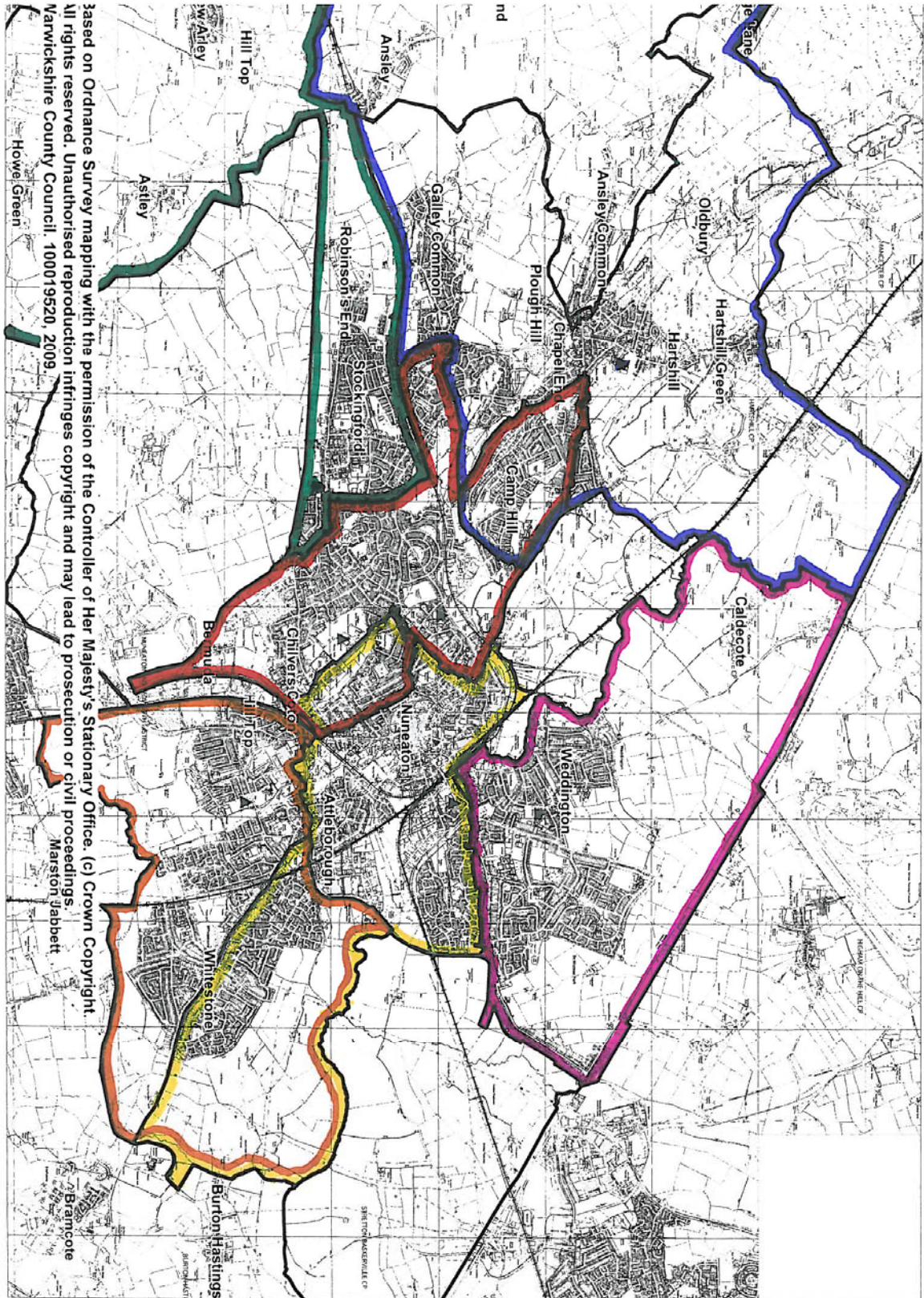
One of the major drives for the review of priority areas is to ensure that the numbers of children within each area match up with the capacities of the priority schools. With the planned closures of Alderman Smith and Manor Park and a creation of a new Academy on the Alderman Smith site there will not be sufficient space for all of the children who live in the priority areas of Manor Park and Alderman Smith to attend the Academy. It is therefore necessary to review the current priority areas.

There are also three areas that currently have no priority for any school.

- The Arbury Estate
- Caldecote
- Stretton Baskerville

At the moment there is very little development in these areas but it is planned to place these areas within a school priority area.

# Current Nuneaton Town Priority Areas



Based on Ordnance Survey mapping with the permission of the Controller of Her Majesty's Stationary Office. (c) Crown Copyright.  
 All rights reserved. Unauthorised reproduction infringes copyright and may lead to prosecution or civil proceedings.  
 Warwickshire County Council, 100019520, 2009.  
 Howel Green  
 Marston Jabbett

| KEY       |                |            |       |             |              |
|-----------|----------------|------------|-------|-------------|--------------|
| Hartshill | Alderman Smith | Manor Park | Etone | Higham Lane | George Eliot |



## Existing Rural Priority Areas as of October 2009

The Rural part of the Nuneaton Schools priority areas extends into North Warwickshire taking in the parishes of Arley, Ansley and Fillongley. These areas are currently primarily shared between three schools: Alderman Smith, Ash Green and Hartshill Schools with a small area also lying in the priority area of Coleshill School.

It is anticipated that the rural area that is solely in the Priority Area of Alderman Smith School, which includes the villages of Old and New Arley, will remain in the priority area for the Academy; this being the closest and most accessible school from the villages.

The Parish of Ansley is currently in the priority area of both Alderman Smith and Hartshill Schools. As of January 2009 there were 130 secondary aged pupils in the area. 63 of which were attending Hartshill School and 44 attending Alderman Smith School. The remainder were attending other schools in the Nuneaton and North Warwickshire areas.

The Parish of Fillongley is currently in the priority area of both Alderman Smith and Ash Green Schools. As of January 2009 there were 19 secondary aged pupils in the area. 5 of which were attending Ash Green School and 4 attending Alderman Smith School. The remainder were attending other schools in the Nuneaton and North Warwickshire areas.

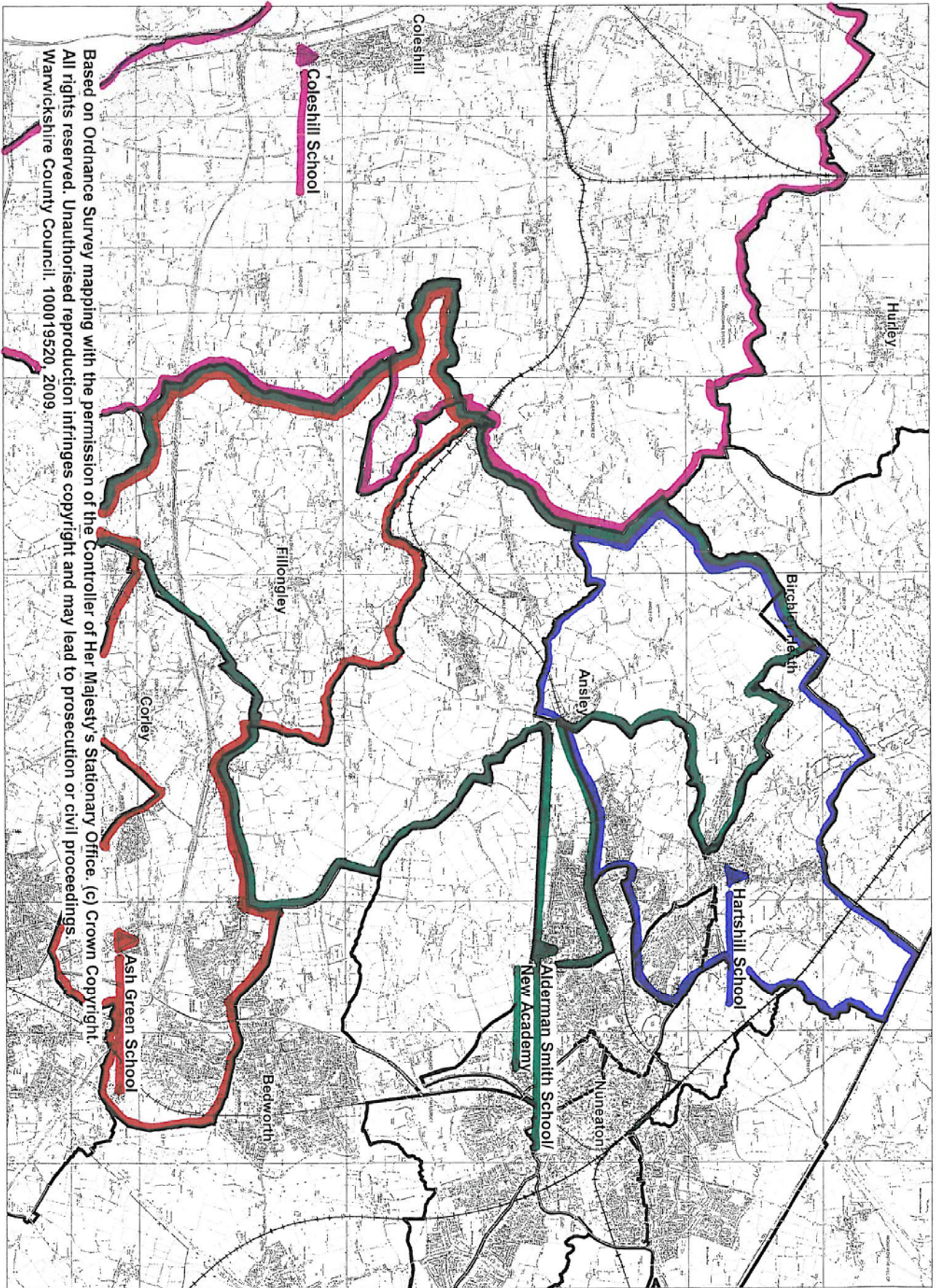
The Shawbury Lane area lies in the parish of Fillongley and along with Ash Green and Alderman Smith Schools this area is also shared with Coleshill School. As of January 2009 there were 5 secondary aged pupils in the area all of whom were attending Coleshill School. It is therefore anticipated that this area will become part of the priority area of Coleshill School.

**Alderman Smith School** – Parish of Fillongley is shared with Ash Green School. The Shawbury Lane area of Fillongley Parish is also shared with Coleshill School. Parish of Ansley is shared with Hartshill School. The villages of Old Arley and New Arley are solely in the priority area of Alderman Smith School.

**Ash Green School** – Parish of Fillongley is shared with Alderman Smith School. The Shawbury Lane area of Fillongley Parish is also shared with Coleshill School.

**Hartshill School** – Parish of Ansley is shared with Alderman Smith School.

**Coleshill School** – The Shawbury Lane area of Fillongley Parish is shared with Alderman Smith and Ash Green Schools.



Based on Ordnance Survey mapping with the permission of the Controller of Her Majesty's Stationary Office. (c) Crown Copyright.  
 All rights reserved. Unauthorised reproduction infringes copyright and may lead to prosecution or civil proceedings.  
 Warwickshire County Council. 100019520, 2009



A number of options have been considered and discussed informally with the schools concerned. The proposals below seem to be the most appropriate way forward to ensure the long term viability of schools within Nuneaton and Hartshill as well as removing the existing pattern of shared priority areas from across the area.

### Higham Lane

- Existing Priority Area
- Caldecote Region
- Area of Etone's priority area north of Midland Road and Corporation Street

Higham Lane School is currently able to take all of the children within the priority area that require a school place.

### Hartshill

- Existing Priority Area
- Camp Hill region previously shared with Manor Park
- Manor Park Priority Area north of Railway Line

Hartshill School will be able to accommodate all of the pupils from the Camp Hill area; the majority of which already are attending Hartshill School. The railway line will form a natural boundary between the priority areas of Hartshill and the new Academy should there be further development in the region.

### Etone

- Existing priority area less the North side of Lutterworth Road, Eastboro Way to River Anker and estates between. (e.g. Crowhill, Whitestone).
- Previously shared area with Manor Park plus Manor Park area East of Canal
- Stretton Baskerville North of Railway Line

### George Eliot

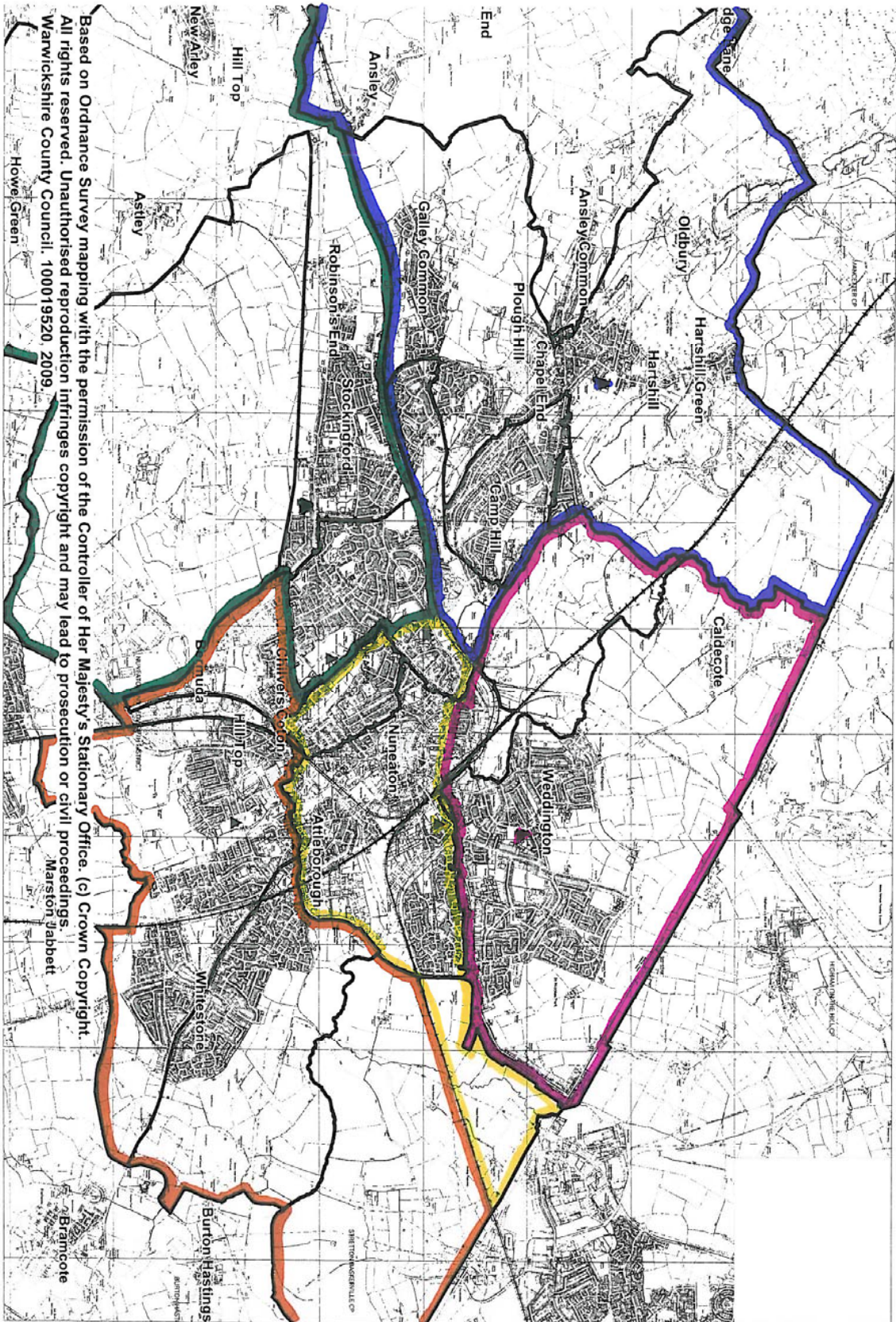
- Existing priority area
- The North side of Lutterworth Road, Eastboro Way to River Anker and estates between previously shared with Etone. (e.g. Crowhill, Whitestone).
- Whitestone region previously shared with Etone
- Stretton Baskerville South of Railway Line
- Area of Manor Park's priority area south of Heath End Road.

### New Academy

- Existing priority area of Alderman Smith
- Remainder of Manor Park's priority area
- Arbury Estate

## Implications

- Eastern boundary of New Academy provides a rational geographical divide with the proposed Etone priority area, so that no parts of the previous Manor Park priority area are an unreasonable distance from a secondary school.
- The option would maximise the area the New Academy could accommodate.
- The proposed arrangements provide a larger priority area for George Eliot School to assist the long term sustainability of the school.
- The railway line provides an appropriate and 'natural' boundary line between Hartshill and the New Academy and Hartshill and Etone and provides a coherent area for Hartshill School.
- The additional area given to Etone is balanced by the loss of the shared Whitestone area and provides a potentially attractive alternative school for pupils in the centre of Nuneaton.
- Extending the Higham Lane priority area should increase the number of 'in area' places it offers and should marginally reduce the number of pupils who go to the school from out of its area. This could be particularly significant when the Judkins Quarry area is developed for housing.
- The addition of the existing Manor Park priority South of Heath End Road will help further to align more closely the George Eliot priority area with its capacity and marginally reduce the pressure on the New Academy.



Based on Ordnance Survey mapping with the permission of the Controller of Her Majesty's Stationary Office. (c) Crown Copyright.  
 All rights reserved. Unauthorised reproduction infringes copyright and may lead to prosecution or civil proceedings.  
 Warwickshire County Council. 100019520. 2009.



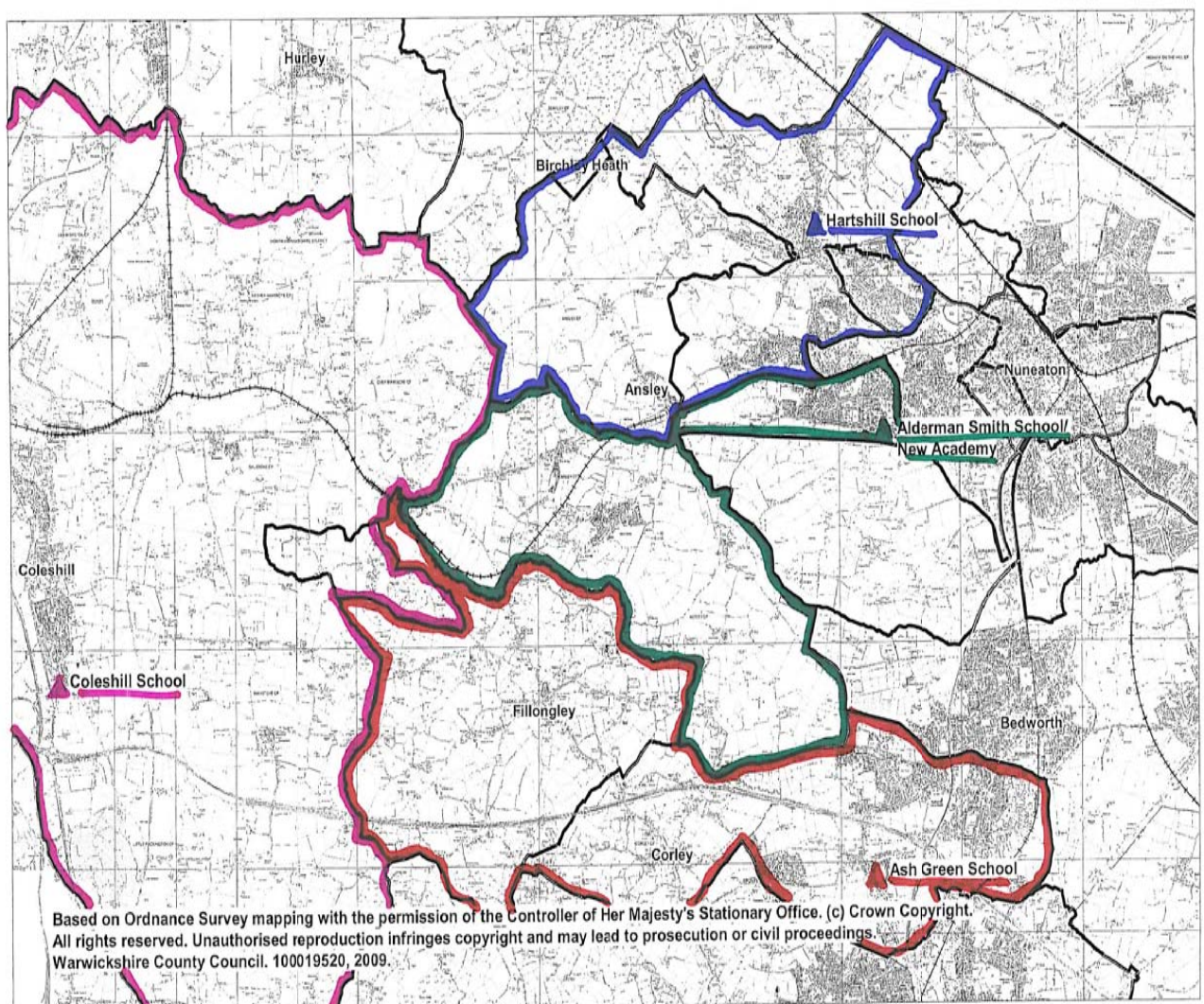
## Proposal for Rural Area

**New Academy** – Loses the previously shared areas of Fillongley Parish to Ash Green School and Ansley Parish to Hartshill School.

**Ash Green School** – Retains all of the previously shared area of Fillongley parish.

**Hartshill School** – Retains all of Hartshill's priority area including the previously shared area of Ansley Parish.

**Coleshill School** - The Shawbury Lane area of Fillongley Parish will transfer to the priority area of Coleshill School only.



## Implications

- Benefit of largest reduction in number of pupils in the rural area of the New Academy.
- Removal of shared areas simplifies priority areas for parents.
- New entrants in the Ansley Parish, Fillongley Parish and Shawbury Lane areas would not have priority for admission to the New Academy. New pupils living in these areas may have no entitlement to free travel to the New Academy.
- May not have additional pupil travel costs.
- May result in a small increase in pupil numbers at Hartshill, Ash Green and Coleshill Schools. Each school should be able to accommodate the additional pupils from this option.